



West Devon  
Methodist Circuit

## NEWSLETTER

Summer 2026

*"He put a new song in my mouth, a hymn of praise to our God."*

Psalm 40 v 3

### Introducing Sally O'Hare



It is wonderful to welcome student minister Sally to the West Devon Circuit, who will be with us from 22<sup>nd</sup> May to 28<sup>th</sup> June. Sally is a student minister at Queen's College, Birmingham and is looking forward to experiencing different aspects of rural ministry.

Sally is from Walsall, West Midlands and up to now, her experience of Devon is the occasional childhood holiday in the area.

How is she feeling about her stay in West Devon?

"I'm a bit nervous but really looking forward to it. I'm conscious that it will be very different to what I am used to and there is lots to learn."

Sally's career prior to candidating for the ministry was as a Project Manager for Network Rail. It would be interesting to

get her views on the new station at Okehampton!

Sally's journey into ministry began formally whilst at Aberystwyth University, where she began training as a Worship Leader. She enjoyed the role but felt challenged by people who suggested she explore a call to preach, which she did. Sally has worked with the Bible Reading Fellowship, which is the home of Messy Church. We're looking forward to her being at Hatherleigh's next Messy Church in June.

Thinking about her route to Ministerial Training at Queen's, Sally reflected, "It was a nagging sense that there was something else. Working for the Railway was no longer satisfying. From Worship Leading to Preaching, Messy Church and then candidating -

every time I thought someone sensible would say no. I thought candidating for the ministry would make the nag go away, but it didn't. The nag, the call is persistent." This placement comes at the end of the first year of a two-year course. Sally hopes to be in Circuit in September 2027. She has preaching appointments across the Circuit so will be meeting as many people as possible throughout her stay. Being in rural Devon for a little over a month will no doubt be quite a change from what she may be used to, but she already has an awareness of a particular cultural tradition. When asked whether it was jam or cream on top, she immediately responded, "Jam of course."

Welcome Sally, we're sure you will feel at home.

# INFUSION

children | youth | families



**Messy Church**  
- Hatherleigh -

3:30 - 6:00pm  
Hatherleigh Methodist Church  
Meeting once a month (nearly every 2nd Friday)

2026 Dates  
 Fri 24th Apr      Fri 11th Sep  
 Fri 8th May        Fri 9th Oct  
 Fri 12th Jun       Fri 13th Nov  
 Fri 10th Jul        Fri 11th Dec  
 Fri 14th Aug

Join us after-school for crafts, games and activities based around a bible story. Sessions will end with a simple meal, before tidy-up time. Suitable for all ages. All children to be accompanied by a responsible adult. Donations welcome.

Ideally, register to help with catering numbers via [westdevonmethodists.org.uk/youth/activities](https://westdevonmethodists.org.uk/youth/activities)

INFUSION  @infusion.methodist  @infusion.methodist  West Devon Methodist Circuit 



**Messy Church**  
- Hatherleigh -

3:30  Play Time

4:00  Activities

4:45  Story & Group Activity

5:15  Tea Time

5:45  Tidy Up Time

6:00  Home Time

INFUSION  @infusion.methodist  @infusion.methodist  West Devon Methodist Circuit 

At time of going to press, there have been two Messy Church events at Hatherleigh. It's a time of fun and food, with a theme for the day. The atmosphere is relaxed and everyone joins in with the tidying up too. Parents have been keen to try out the new cordless vacuum, which is appreciated!



Messy Church at Hatherleigh



**Busy Bees**  
 Hatherleigh Baby and Toddler Group  
 9:30 - 11:30am  
 Hatherleigh Methodist Church  
 Meeting twice a month during term time.  
 £2 for the first child, £1 per additional sibling

**Busy Bees** dates for the Summer are: 4<sup>th</sup> June, 18<sup>th</sup> June, 2<sup>nd</sup> July and 16<sup>th</sup> July  
 We are welcoming new babies into the "Busy Beehive" which is a joy. Happy to provide a

cuppa and sit down for tired mums!

**STAY AND PLAY CAFE**

2026  
 Tuesday 17th February  
 Tuesday 14th April  
 Tuesday 26th May  
 Tuesday 28th July  
 Tuesday 18th August  
 Tuesday 27th October  
 Tuesday 29th December

INFUSION | Okehampton United Charities | West Devon | CHURCHES TOGETHER

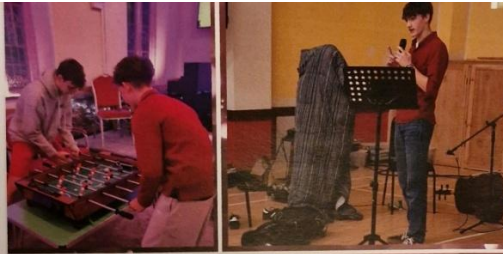
**Stay and Play Café** continues to be a very well attended event. Thank you to the volunteers who make this possible. There is always room for more volunteers to help spread the workload and enable more families to attend. It's not difficult, it is joyous and you get a lunch too. Please contact Sarah for more information.

**Out and About** Everyone enjoyed the bear hunt at Roadford Lake on 20<sup>th</sup> May. We walked through the story around the lake, collected story cards, made maps, painted bears, enjoyed a teddy bears' picnic and of course found a bear!

Our next sessions are on Wednesday 15th July at Beamsworthy Alpacas!

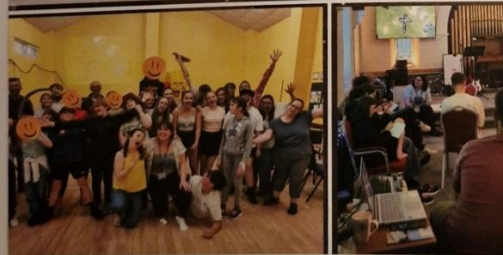


Out and About is the West Devon Parent and Toddler Touring Group. Contact Sarah for details.



**kree:8**

Worship • Food • Games



**Kree8** is the monthly youth service (Year 5+) which meets at Madworthy Next dates are 21<sup>st</sup> June and 19<sup>th</sup> July. Doors open at 6.30pm with bring and share food. Main event 7.00 – 8.30pm

Ecumenical in nature, drawing people from a number of different churches. Everyone welcome. Find more details and sign up via the website <https://www.westdevonmethodists.org.uk>

Coming soon is the youth event which has been going for around forty years. **3<sup>rd</sup> - 5<sup>th</sup> July Stowford Camp** has a new venue this year at Clinton Hall, Merton. It is an interdenominational event overseen by the West Devon Methodist Circuit and led by a group of local volunteers. People are welcome from any or no faith background. Inspirational teaching, fun

activities, worship and a chance to explore what a life with God can look like. Check the website for details.

---

*“Children are like wet cement. Whatever falls on them makes an impression.”*

Haim Ginot

---

Some of the folk at **Forest Church** in May. A large pine tree had blown down, and the shallow root mass made quite a backdrop.



Next dates are 14<sup>th</sup> June and 12<sup>th</sup> July  
Forest Church is a lovely way to engage with the Creator through the creation. A scripture to reflect upon, prayer and fellowship. The walks are not difficult but sensible footwear advised.

A poster for Forest Church with a dark, textured background of a forest. At the top left is a white line-art logo of a tree with a cross inside its canopy. To the right of the logo, the text "Forest Church" is written in a large, white, sans-serif font. Below this, in a smaller font, is "- exploring God's creation -". The main body of text is centered and reads: "Join us every 2nd Sunday, to meet, explore and worship in God's Creation. 2-3pm Meet at Evergreen Farm, Beckett, Ashwater, Devon, EX21 5HE Come prepared for whatever the weather. Hot chocolate at the end. Dogs on leads welcome. Suitable for all ages. Toilets available at the meeting point." At the bottom left is the West Devon Methodist Circuit logo, a stylized tree. To its right are social media icons for Facebook and a website icon, followed by the text "West Devon Methodist Circuit", "westdevon.methodist", and "westdevonmethodists.org.uk".

**Forest Church**  
- exploring God's creation -

Join us every 2nd Sunday, to meet, explore and worship in God's Creation.  
2-3pm  
Meet at Evergreen Farm,  
Beckett, Ashwater, Devon, EX21 5HE

Come prepared for whatever the weather.  
Hot chocolate at the end.  
Dogs on leads welcome.  
Suitable for all ages.  
Toilets available at the meeting point.

West Devon Methodist Circuit  
westdevon.methodist  
westdevonmethodists.org.uk

---

*“Look deep into nature, and then you will understand everything better.”*

Albert Einstein

---

## Petrockstowe

As well as the regular hosting of the Coffee Morning at Hatherleigh, next dates 2<sup>nd</sup> June & 14<sup>th</sup> July, there are two upcoming events at Baxter Hall, Petrockstowe. We look forward to welcoming as many people as possible to enjoy fun, fellowship and at the quiz, a little friendly competition!



**Petrockstowe Community Church**

# QUIZ NIGHT

**BAXTER HALL,  
PETROCKSTOWE**

<b>Saturday 6th June</b>	<b>TEAMS OF 6 / £6 PER PERSON</b>
<b>Doors Open 7:00pm / Start 7:30pm</b>	<b>Book a table now!! Ann Fox - 07764 788739 / 01837 810501</b>

Enjoy light refreshments  
Prizes to be won!

Bar | Raffle

Charity Registration No.: 1204345



**PETROCKSTOWE COMMUNITY CHURCH**

# Arts, Crafts & Preloved

**Saturday 18 July**

**Set up from 9:00am  
Doors Open: 10:00am - 4:00pm  
Baxter Hall, Petrockstowe, EX20 3HJ**

**All Sellers Welcome -  
incl. local businesses.  
Book your pitch now!**

**Tables: Small - £5 / Large - £10  
Outdoor Pitches: £8  
(all payable on booking, non refundable)**

**To book: Julie Harris  
Text or Message:  
07943 006966 / mrs.j.harris64@gmail.com**

**Delicious Baps: Bacon ~ Sausage ~ Egg |  
Hot Drinks | Seating Area |  
Bar Open from 12:00pm**

All proceeds go to church maintenance - Registered Charity Number 1204345

## Chilla

On Tuesday 19<sup>th</sup> May Chilla Chapel held the second service of reflective worship and renewal. Angela Banfield led us in a quiet contemplative time without a sermon and making use of times of silence. We focussed on the scriptures Matthew 11v28,29 and Luke 22-32. A beautiful, adapted version of the Lord's Prayer was sung to Finlandia It was lovely to see people attend from different churches in the circuit to share in this gentle time of worship and fellowship. The next service is yet. to be announced, so keep your eye on the Circuit Poster and Facebook for details in due course

---

*"Silence is not only golden; it is seldom misquoted."*

Bob Monkhouse

---

# Words on the Lord's Prayer to be sung to Finlandia

*Reproduced by kind permission of Angela Banfield © 2026*

Our Father, may your name be always hallowed,  
Your Kingdom come on earth as high above  
Give us each day, the food our souls will thrive on,  
Forgive us when we fail to live in love.  
Your will be done, by sister and by brother,  
And let us follow where our Lord has led.

Thine is the power, the glory and our heaven  
Safe in this world, we work to build the next.  
If we are hurt, help us forgive the hurter,  
And offer all men grace and love instead.  
Our praise is yours, your power and your glory,  
Yet through our lives, Christ rises from the dead.

## Madworthy



The orchids were out in time for people to enjoy on the Spring Walk on May 3rd. Activity Sundays are a regular feature at Madworthy and people come to enjoy food and fellowship, with activities for all ages. Dogs on leads always welcome.

The next date is the **Summer Fun Day** on August 16<sup>th</sup>. From 11am – 3pm, ideal to come along to after your normal Sunday service.

**Open Community Lunch** Wednesday 10<sup>th</sup> June. All ages invited for a time of friendship, community and good food. Hot lunch and a sweet included. 12.00 with lunch served at 12.15. Suggested donation £7.00 Please book with Beryl 01409 221389 or Barbara 07974 109505

**Memory Café** Thursday 25<sup>th</sup> June. Offering practical and emotional support and most importantly, the hand of friendship to people living with dementia and their carers. 2.00 – 3.30pm Contact Barbara for more information.

**Creative Faith** Fourth Saturday of the month. Breakfast starts at 9.30am with journaling from 10.00am. Suitable for all ages and levels of experience. A time to slow down, meditate on scripture and get creative. Next dates 27<sup>th</sup> June, 25<sup>th</sup> July, 22<sup>nd</sup> August.

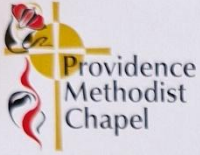
## Providence



The first of this year's series of exhibition days featuring Chris Chapman photographs took place on Saturday 9<sup>th</sup> May. It was a lovely day and a steady stream of people came throughout the day to enjoy the photographs including some new ones for this year. There was also a fascinating film being shown in the chapel. Chris' relatives Charlie and Rosie made the trip up from Brighton and were happily chatting away over tea and cake. Ally from Iddesleigh commented on the chairs saying, "I was brought up with the view that Chapel was more to be endured than enjoyed. I didn't sit down in Chapel expecting to be so comfortable!"

There was a corner dedicated to Frank Smith who sadly passed away earlier this year. His 100<sup>th</sup> birthday was 12<sup>th</sup>

September and featured in last Autumn's edition of the newsletter. Frank had written a number of books, and these were displayed. There are copies of his novels available, please contact Margaret Allin for details.



Providence  
Methodist  
Chapel  
Throwleigh  
Devon EX20 2HZ

# EXHIBITION

## Chris Chapman

### The Dartmoor Photographs



Opening every 2nd Saturday  
of the month May to  
October 2026  
12.00 pm – 6.00 pm on:  
Saturday 09 May 2026  
Saturday 13 June 2026  
Saturday 11 July 2026  
Saturday 08 August 2026  
Saturday 12 September 2026  
Saturday 10 October 2026  
Refreshments available.

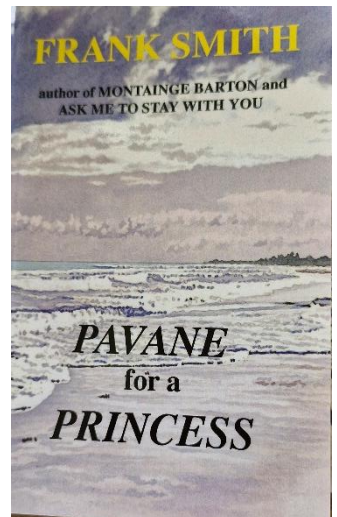
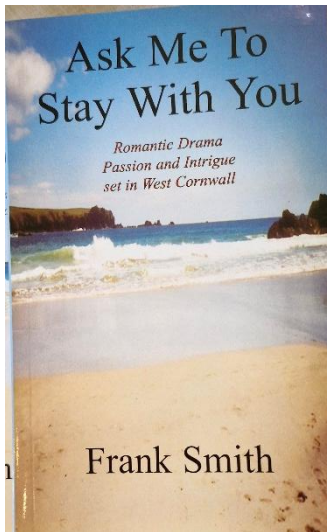
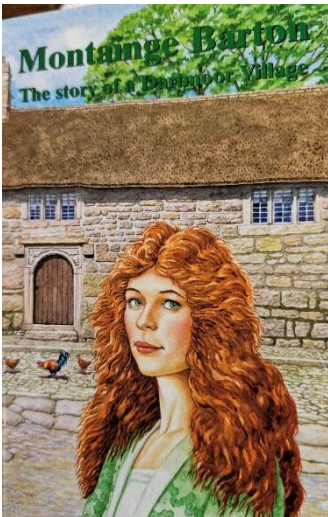


For further information visit:  
[thedartmoorphotographs.co.uk](http://thedartmoorphotographs.co.uk)  
[@thedartmoorphotographs](https://www.instagram.com/thedartmoorphotographs)  
w3w string.lashed.increment

Funded by



The Methodist Church



## Hatherleigh

The Sunday Club celebrated its anniversary on May 17<sup>th</sup>. The last few monthly family services had been looking at different aspects of the theme of "Hope". People had also been asked to draw around their hand and decorate it for the window display. Naturally the title for the service was "Hands of Hope". The children presented a reflection on hope, asking "Have you ever said, 'I hope my team wins' or 'I hope my sheep lambs soon.?' There is a distinction between wishful thinking hope and a certain hope.

After the blessing we heard the Max Bygraves classic "You need hands" as more people added their hand outlines to the window display. The speed with which the chapel was converted to a buffet lunch space was remarkable. It was commented that Hatherleigh is particularly blessed with pudding cooks! Thank you to all who made this lovely day possible.

Hatherleigh is known for its Tuesday coffee mornings and light lunches will follow on June 16<sup>th</sup> and July 28<sup>th</sup>.

### *Wedding Dress Exhibition*

### *Hatherleigh Methodist Church*

*Friday 28<sup>h</sup> & Saturday 29<sup>h</sup> August 11.30 - 4.30*

*Sunday 30<sup>h</sup> August 12.30 - 4.30*

*Refreshments served throughout*

*Donations in aid of the new kitchen*

*Were you married at Hatherleigh and still have your  
dress?*

*Contact Cindy 07756 991392*

# Letter from the Superintendent

June 2026

Dear Friends

I've just gone into the garden and been hit by a wall of heat...and it is very welcome indeed. I tentatively declared "Summer is Here" ...at last. After the recent cold snap, it is more than welcome. Blue skies, warm weather and tea in the garden. I'm a simple man with simple pleasures really.

Unusually Jo and I took our main holiday early this year and have recently returned from Italy, where once again we experienced glorious weather to add to the many amazing sights that we visited. I don't know about you, but I have a bit of a bucket list of things that I want to see during my life. I'll not bore you with the list, but one was ticked off during our trip to Italy (actually Jo also ticked one of hers off as well). Mine was to see "in the flesh" as it were, Da Vinci's The Last Supper. And it far exceeded my expectation. It was a truly immersive experience and an emotional time standing in front of one of Da Vinci's defining masterpieces. Apart from the sheer size of the painting, I was struck by the movement of the individuals around the table. All the disciples reacting to the news that Jesus has said that one of them would betray him. It is an incredible scene, full of mystery and emotion. But there in the centre, all things being drawn to one single point, is Jesus. Calm, serene, humble and yet fully divine. With all around in a sense of chaos and turmoil, Jesus sits hands held out, face full of love and peace...I could speak for hours but I will not...

Our world is a bit like this. Turmoil all around and yet I believe Jesus is Lord of all, and is present in our world, working through his disciples today, in the lightest and the darkest of places...in the sunshine and in the rain. Jesus is ever present through the Holy Spirit.

Wherever we travel this summer, whether at home or abroad, nothing can separate us from the love of God.

In case you are wondering what Jo's bucket list tick was...it was a visit to the Ancient City of Pompeii. Another truly awe-inspiring place.

I hope you have a wonderful summer season...whatever the weather. I look forward to meeting up with you all at one of the many Circuit and church events during this season.

May God bless you all.

Rev Chris

## Winkleigh Methodist Chapel

You are invited to  
Tea & Puddings  
On the  
4<sup>th</sup> Sunday of the month  
At the Chapel  
3pm-4.30pm



**£3 per tea & pudding**

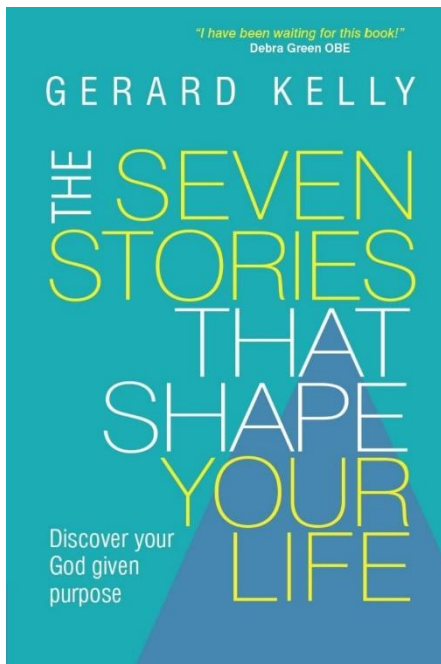
Proceeds for Winkleigh Methodist Chapel

## Winkleigh

Rev Chris will be leading an open-air service at 3pm on the first day of **Winkleigh Fair** which will take place from Sunday 12<sup>th</sup> July through to Saturday 18<sup>th</sup> July. We're praying for suitably summery weather!

## Northlew

There is a special anniversary service on 14<sup>th</sup> June at 2.30pm. Led by Rev Melvyn Cooke and featuring items by the **Stowford Meadow Singers**. Tea to follow.



## Book Review

If you have heard me preach a few times, you may have heard me share some of Gerard Kelly's poetry. This is quite different; however, but he still writes in a poetic way. Engaging and accessible, he tackles the big themes of the Christian faith with a new insight. I found this book to be uplifting, not a dry theological textbook, but nonetheless packed with theology in the sense that it is a window into the heart and character of God.

This is a book that will make you think and prompt you to respond. To quote Cathy Madavan, "Gerard is such a unique writer – with the soul of a poet, the mind of an academic and the style of a novelist, he makes reading both pleasant and purposeful. You will love this book. Wisdom and insight leak brilliantly from every page."

*Ed.*



## Fairplace

On 25<sup>th</sup> April Pat & Colin Bater celebrated their Diamond Wedding Anniversary with friends and family at Fairplace. A service led by Angela Banfield was followed by an amazing tea. Pat and Colin were very touched by all the good wishes and thank everyone who enabled the day to be so special.



Over the weekend of 27<sup>th</sup> & 28<sup>th</sup> June there will be an exhibition of different aspects of creativity with many groups taking part in making displays. On the Sunday afternoon at 4pm there will be a service celebrating creativity.

---

*“Everybody born comes from the Creator trailing wisps of glory. We come from the Creator with creativity. I think that each one of us is born with creativity.”*

Maya Angelou

---

### Notice from Lucy Gilbert

Dear friends,

**The Leaders of Worship and Preachers Trust will be holding their annual CIRCUIT SERVICE on Sunday 12<sup>th</sup> July at Bridestowe 6.30pm**

**Including the rededication of LOCAL PREACHERS and WORSHIP LEADERS.**

**Please come along and support this worthy cause. It will be a lovely evening.**

## Boasley

**Afternoon Tea** is served on the first Sunday of each month 2.30 – 4.30pm. No charge but donations welcome!

**Soup & Sweet** third Thursday of each month. We are now into our twelfth year and it's as popular as ever with the local community (and further away too!) No fixed charge but donations gratefully accepted. We offer at least five choices of soup, numerous puddings plus tea and coffee. Always a very busy event.

**Reflection & Refreshment** Last Thursday of the month led by Angela Banfield from 11.00am. Usually we contemplate a chosen text and discussion ensues! A time to air our thoughts and perhaps consider topical issues too.

Boasley members regularly join the **Joyful Noise Singers** along with members of other churches to bring music to care homes in the area.

## Alan Partridge

There are unsung heroes in the life of the Circuit and we say goodbye to Alan in his role as Circuit Treasurer, who is retiring at the end of August after seven years in the post. Alan, who is in his eightieth year actually gave his notice two years ago but somehow has delayed his retirement until 2026.

Alan, who was originally from Merton, left his job in Exeter as a Chartered Secretary dealing with accounts and legal paperwork to go to London. Unlike the legend of Dick Whittington who went to London to make his fortune, Alan responded to a Local Preacher who mentioned leaving desk jobs to serve the Kingdom of God. He felt a strong calling to serve in a deprived area and went to Stratford in the Borough of Newham. Beginning with working with the Newham Community Renewal Programme for two years, Alan stayed in London for the next thirty-seven years. He was a member of Methodist staff from 1977 to retirement and still regularly goes to visit the area and the people he holds so dear.

In that time, Alan served in different roles as the needs of the community became apparent. He was a warden at a hostel, managed a 53-bed hotel which was earmarked for demolition for a road widening scheme – the two years it would have been vacant it became a home for the homeless. He worked in night shelters for ten years and has seen up close the reality for those who have slipped through the cracks of society.

Mental health is a serious issue amongst those affected by poverty and homelessness. Alan helped to start Newham's Mental Health Association long before it was an issue

under the media spotlight. Indeed, the Methodist Church was able to fund a Mental Health Support Worker, such was the need of people who attended the Drop – In centre.

Alan saw his work with finance as an integral part of the ministry of the Church. He is not in favour of the mindset which leads some churches to “build bigger barns” as Jesus spoke of in his parable of the rich fool. (Luke 12:16-21) “It’s about building the Kingdom of God, making a difference,” says Alan, “for example, we need to see community groups who hire our buildings as part of the Kingdom of God, not just sources of income.”

Asked about what qualities are necessary for Circuit Treasurer, Alan was keen to emphasise the support given by the Circuit Leadership Team. “You need experience of keeping accounts, accurate record keeping and it’s good to have some vision and imagination.” It is clear that Alan views the role of Circuit Treasurer as more than processing numbers, but he doesn’t see it as particularly difficult.

“There is an informal audit every quarter with a member of the CLT checking on bills, receipts etc.. During the year there are meetings with the CLT, Church Treasurers and the Circuit Meeting and the final account with the Trustees Annual Report after the accounts have been audited.”

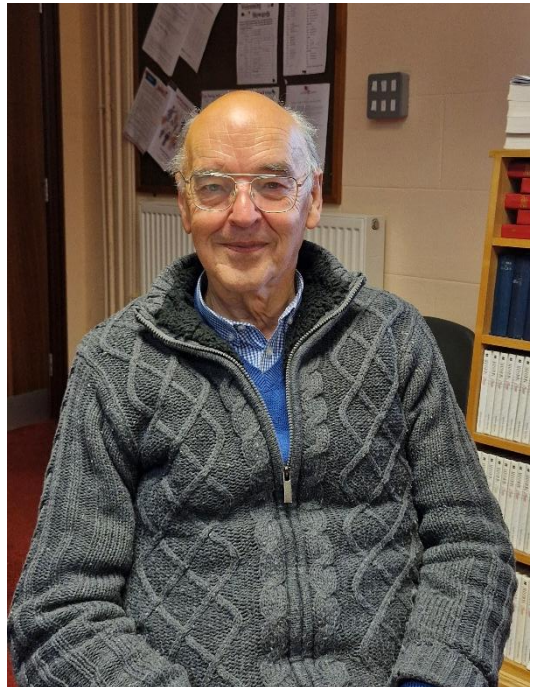
“I am grateful to Jennifer Thorne who spent time with me having conversations and a handover period and I will help the new person any way I can. I will make sure the accounts are done in time for the end of August and it would be most helpful for the new person to see how I do them.”

So, will he be slowing down a bit now he is retiring? Not exactly. He will still be active with the group he started to bring isolated people together; PLAIT meets on a Wednesday. He also helps with Cheeky Monkeys, the toddler group at Fairplace and is often volunteering at Stay and Play Café.

Add to that, Alan has set himself the goal of walking a thousand miles in this his eightieth year. Will you be exhausted? “Not really, I’ve got to over four hundred and fifty already and I don’t go out if the weather is too bad.”

There is little doubt he will reach his goal. Perhaps he will slow down a little and he and Joyce will enjoy more time together.

We thank you for all your work over the past seven years and wish you and Joyce every blessing.





***Fern by Gerard Kelly***

***The pattern of a fern  
Has an intricacy  
Indicative of God's artistry  
Bold and breathtaking to see  
So too does the pattern of me***

***The sea's waves falling  
In perfect formation  
Roll on in celebration  
Of divine inspiration  
And I too am a display  
Of his creation***

**Editor's Note**

As I put the newsletter together it looks like there is a lot going on. We could probably fill another couple of pages, but sixteen seems about right.

Thank you to everyone who sends me information to include. It's important that the churches in the circuit support each other and build that sense of fellowship.

On May 10<sup>th</sup> we held the first of a new series of Circuit Services at Hatherleigh. Informal in nature, we had a good sing and enjoyed some of Rev Chris' holiday snaps. The idea is for the service to travel around so that everyone is included. The next one is at Exbourne on 14<sup>th</sup> June followed by the LWPT service at Bridestowe on 12<sup>th</sup> July and then at Boasley on 9<sup>th</sup> August. Each one will be a bit different, and we are open to your ideas as to what you would like included.

The Methodist model of Circuits is a good one, designed to build communities and offer mutual support. Circuits now are bigger than they used to be and it can be an effort to travel from one end to the other, however, it is good to meet, worship and pray together. Engaging with events at churches other than your own is a way to give and receive encouragement and I am sure that there is something that you haven't been to before, so the challenge this summer is to try something new!

Vicki [foreva26@hotmail.co.uk](mailto:foreva26@hotmail.co.uk)

**Superintendent Minister**

Rev Chris Jackson (01837 52302)

[chris.jackson7@gmail.com](mailto:chris.jackson7@gmail.com)

[www.westdevonmethodists.org.uk](http://www.westdevonmethodists.org.uk)

